

GALA TRACK LIGHT INSTALLATION INSTRUCTIONS

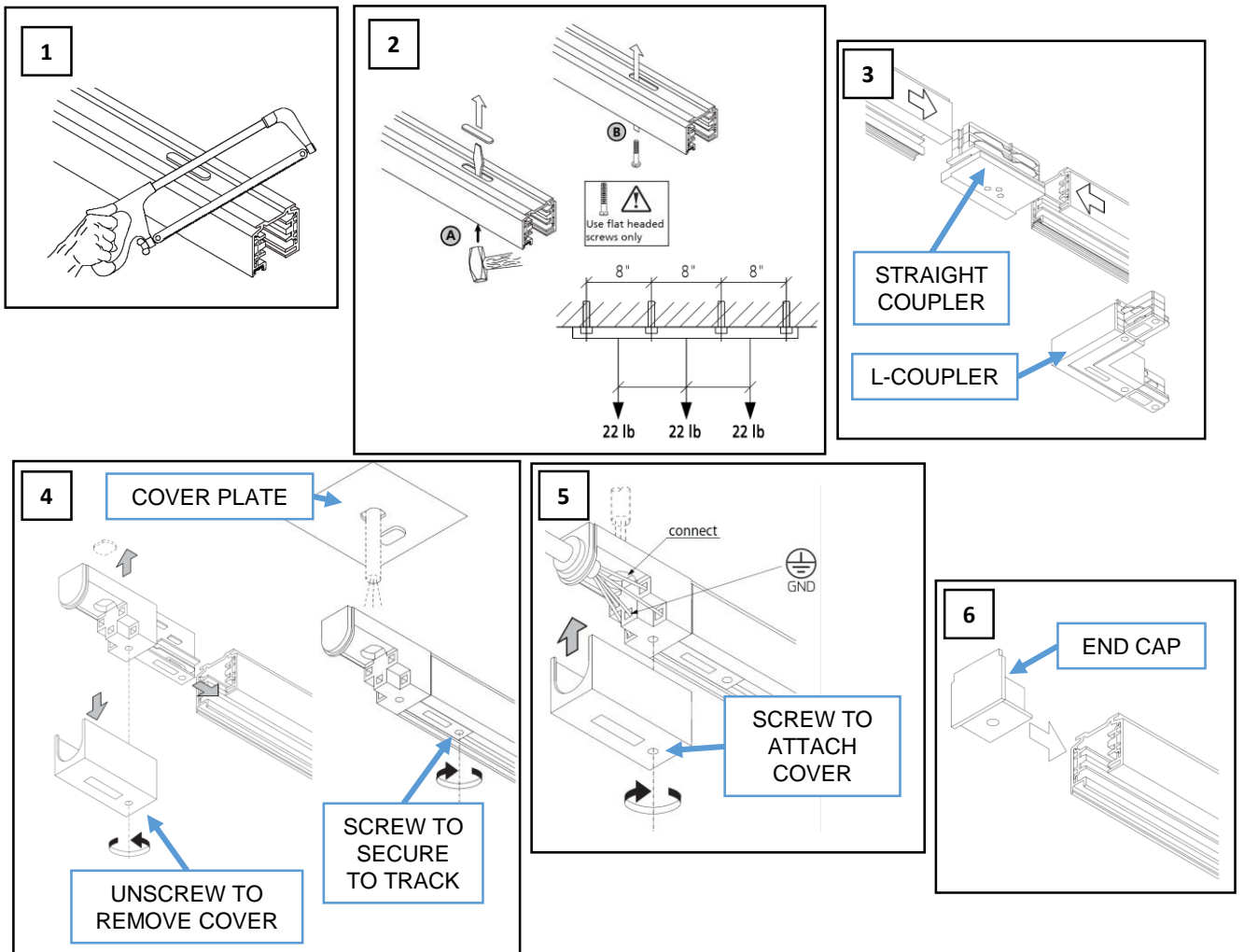


WARNING - RISK OF FIRE AND ELECTRICAL SHOCK. FIXTURE MUST BE INSTALLED BY A QUALIFIED ELECTRICIAN ONLY. FIXTURE IS INTENDED FOR INSTALLATION IN ACCORDANCE WITH THE NATIONAL ELECTRICAL CODE, LOCAL AND FEDERAL SPECIFICATIONS. DISCONNECT POWER AT ELECTRICAL PANEL BEFORE SERVICING. RETAIN THESE INSTRUCTIONS FOR MAINTENANCE REFERENCE.

MATERIALS USED FOR CEILING FIXATION SHOULD CONFORM TO THE RELEVANT BUILDING REGULATIONS. IT IS ESSENTIAL TO COVER THE ENDS OF THE TRACK WITH END COVERS OR PROTECTIVE CAPS.

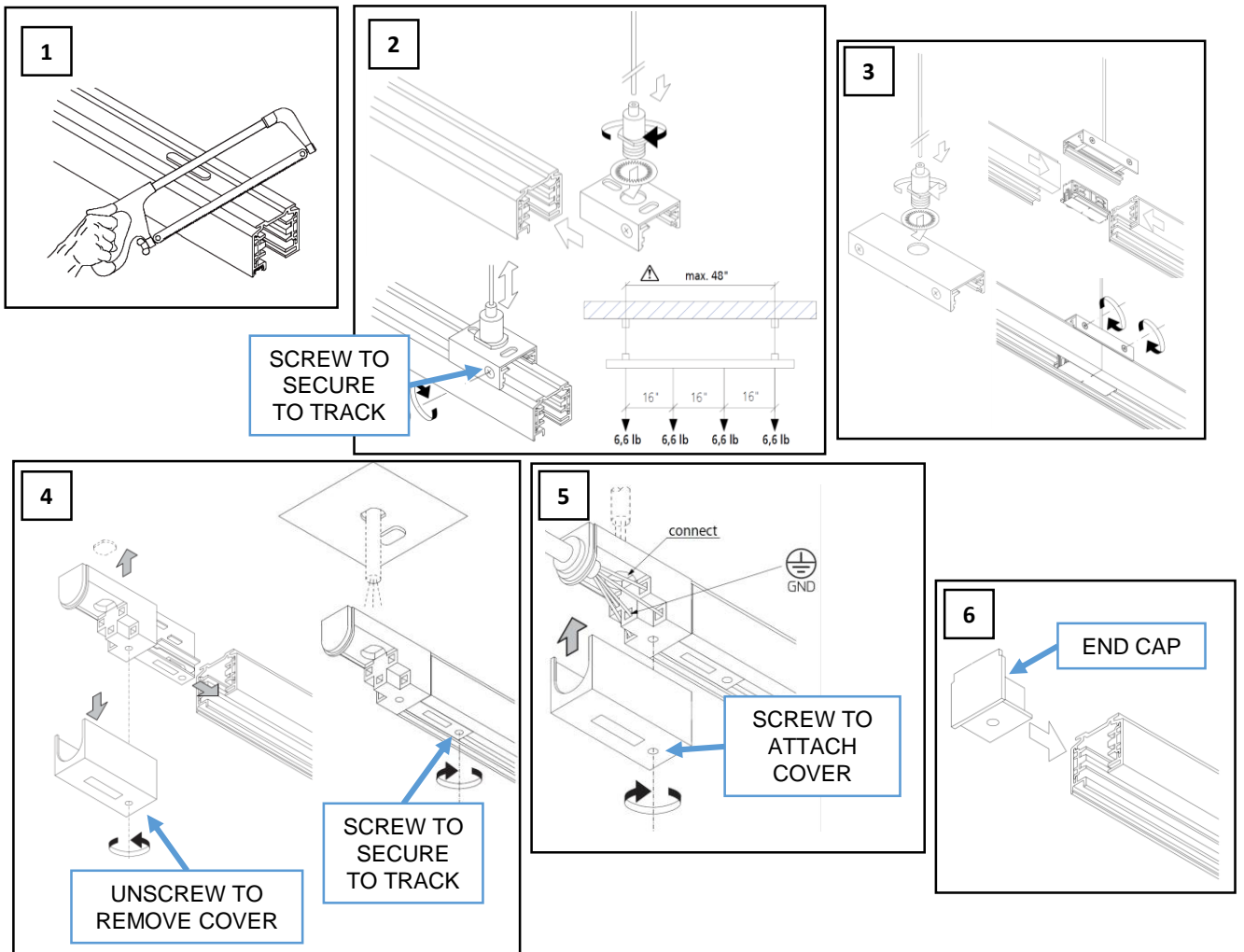
**DO NOT INSTALL THIS TRACK IN WET OR DAMP LOCATIONS.
DO NOT INSTALL ANY PART OF A TRACK SYSTEM LESS THAN 5' ABOVE THE FLOOR.
DO NOT INSTALL ANY FIXTURE CLOSER THAN 6" FROM ANY CURTAIN OR SIMILAR COMBUSTIBLE MATERIAL.**

SURFACE TRACK INSTALLATION



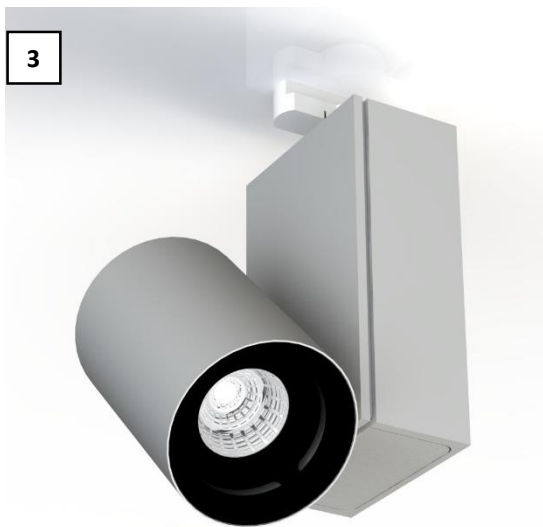
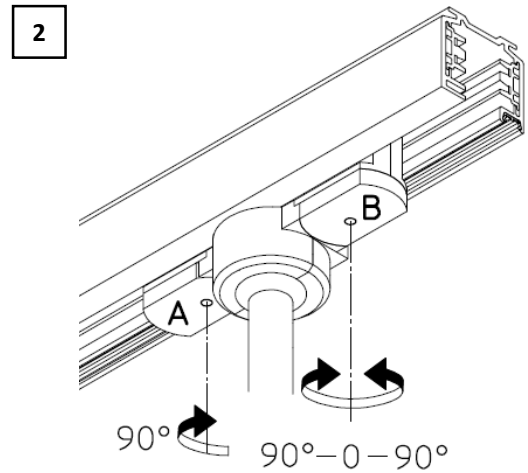
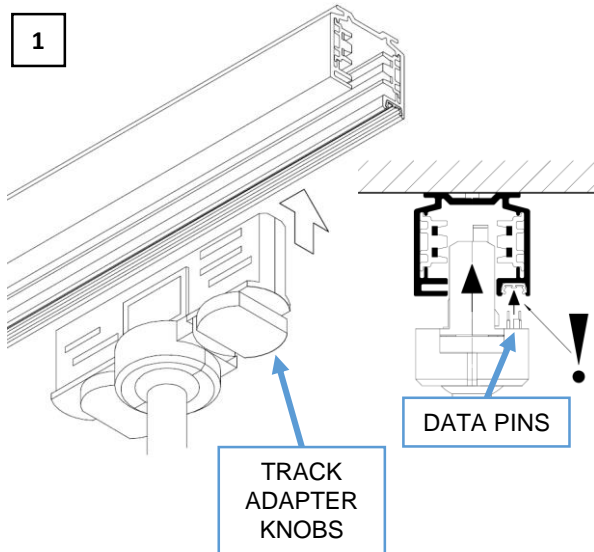
1. CUT THE TRACK TO THE APPROPRIATE LENGTH. DO NOT CUT-OFF LABELED SIDE. REMOVE BURRS AFTER CUTTING. THE BUS BAR DOES NOT HAVE TO BE MOVED OUT OF THE TRACK PROFILE. (FIGURE 1)
2. REMOVE CUT-OUTS FROM THE TRACK USING A SCREW DRIVER AND A HAMMER. SECURE THE TRACK ON TO THE CEILING USING FLAT HEAD SCREWS EVERY 8 INCHES. (FIGURE 2)
3. USE THE STRAIGHT COUPLERS AND L-COULERS TO ASSEMBLE TRACK PER PREDETERMINED LAYOUT. (FIGURE 3)
4. TO INSTALL THE POWER FEED END, ATTACH THE POWER FEED END TO THE TRACK AS FOLLOWS. (FIGURE 4)
 - a) UNSCREW TO REMOVE THE COVER.
 - b) REMOVE THE COVER.
 - c) INSERT POWER FEED END TO THE TRACK.
 - d) SECURE THE POWER FEED END TO THE TRACK USING SCREW.
 - e) BREAK OFF THE HOLE FOR THE POWER LINES FROM THE TOP OF THE POWER FEED END AND THE COVER PLATE.
 - f) PLACE THE COVER PLATE BETWEEN THE CEILING AND THE TRACK, ALLOW THE WIRES FROM THE POWER LINE AND, IF AVAILABLE, CONTROL LINES TO GO THROUGH BOTH OPENINGS.
 - g) ATTACH THE TRACK TO THE CEILING USING THE PREVIOUS STEPS.
5. CONNECT WIRES TO THE CORRECT LUGS. SEE MARKINGS ON THE COMPONENT FOR CORRECT POLARITY. RE-ATTACH COVER USING SCREW. (FIGURE 5)
6. ATTACH END CAP TO OPOSITE END OF TRACK. (FIGURE 6)

PENDANT TRACK INSTALLATION



1. CUT THE TRACK TO THE APPROPRIATE LENGTH. DO NOT CUT-OFF LABELED SIDE. REMOVE BURRS AFTER CUTTING. THE BUS BAR DOES NOT HAVE TO BE MOVED OUT OF THE TRACK PROFILE. (FIGURE 1)
2. ATTACH AIRCRAFT CABLE MOUNT COMPONENTS TO THE TRACK AS SHOWN. USE THE SCREW ON THE SIDE TO LOCK THE ASSEMBLY ON THE TRACK. HANG THE TRACK TO THE CEILING USING THE APPROPRIATE HARDWARE PER THE TYPE OF CEILING AND INSTALLATION AVAILABLE. PLACE AIRCRAFT CABLE EVERY 4FT ALONG THE TRACK. DO NOT EXCEED 26.4LBS PER 4FT. (FIGURE 2)
3. USE THE STRAIGHT COUPLERS AND L-COULPERS TO ASSEMBLE TRACK PER PREDETERMINED LAYOUT. (FIGURE 3)
4. TO INSTALL THE POWER FEED END, ATTACH THE POWER FEED END TO THE TRACK AS FOLLOWS. (FIGURE 4)
 - a) UNSCREW TO REMOVE THE COVER.
 - b) REMOVE THE COVER.
 - c) INSERT POWER FEED END TO THE TRACK.
 - d) SECURE THE POWER FEED END TO THE TRACK USING SCREW.
 - e) BREAK OFF THE HOLE FOR THE POWER LINES FROM THE TOP OF THE POWER FEED END
 - f) RUN THE CABLE FROM THE POWER LINE AND, IF AVAILABLE, CONTROL LINES THROUGH THE POWER FEED END.
5. CONNECT WIRES TO THE CORRECT LUGS. SEE MARKINGS ON THE COMPONENT FOR CORRECT POLARITY. RE-ATTACH COVER USING SCREW. (FIGURE 5)
6. ATTACH END CAP TO OPOSITE END OF TRACK. (FIGURE 6)

TRACK LIGHT INSTALLATION



1. MAKE SURE THE TRACK ADAPTER KNOBS ARE PERPENDICULAR TO THE ADAPTER AS SHOWN. INSERT THE ADAPTER IN THE TRACK. IF YOUR GALA HAS AN OPTIONAL DATA BUS CONNECTION, MAKE SURE THE PINS ARE ALIGNED WITH THE DATA TRACK. (FIGURE 1)
2. LOCATE THE KNOB WHICH DOES NOT HAVE ANY WRITING ON IT, THIS IS KNOB "A". TURN KNOB A CLOCKWISE TO CONNECT THE GALA TRACK LIGHT TO THE NEUTRAL PHASE. TURN KNOB "B" CLOCKWISE TO CONNECT TO PHASE 1, TURN KNOB "B" COUNTER-CLOCK WISE TO CONNECT TO PHASE 2. (FIGURE 2)
3. REPEAT STEPS FOR ALL THE GALA TRACK LIGHTS TO INSTALL.
4. TURN POWER BACK ON AND ORIENT THE GALA TRACK LIGHTS TO THE DESIRED LOCATION.