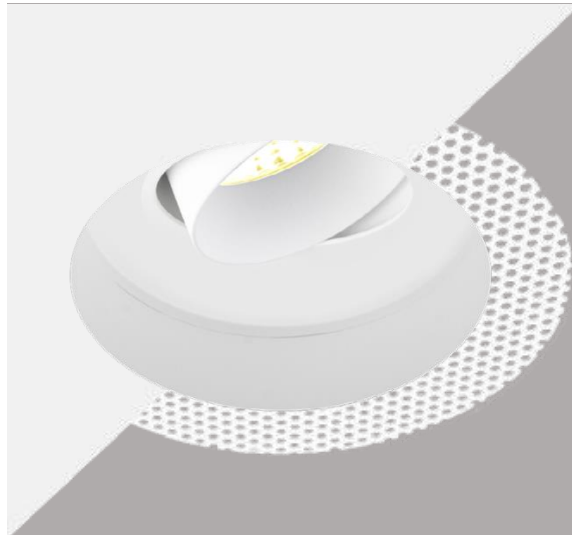
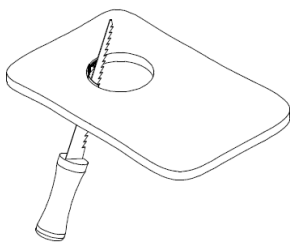

STELLA DOWNLIGHT INSTALLATION INSTRUCTIONS



WARNING - RISK OF FIRE AND ELECTRICAL SHOCK. FIXTURE MUST BE INSTALLED BY A QUALIFIED ELECTRICIAN ONLY. FIXTURE IS INTENDED FOR INSTALLATION IN ACCORDANCE WITH THE NATIONAL ELECTRICAL CODE, LOCAL AND FEDERAL SPECIFICATIONS. DISCONNECT POWER AT ELECTRICAL PANEL BEFORE SERVICING. RETAIN THESE INSTRUCTIONS FOR MAINTENANCE REFERENCE.

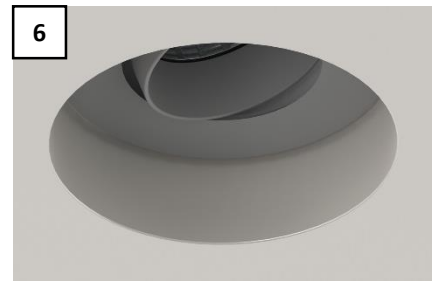
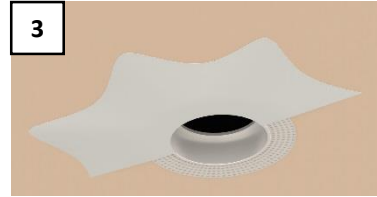
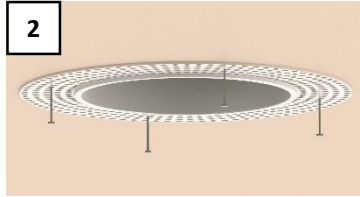
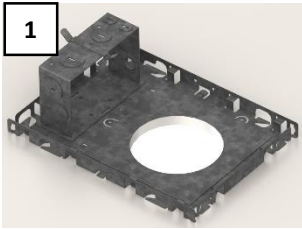
CUTOUT TABLE



FIXTURE	CUTOUT
STELLA 3 O	101.6mm / 4"
STELLA 3 QO	101.6mm / 4"
STELLA 6 O	152.4mm / 6"
STELLA 6 QO	152.4mm / 6"

NOTE: ROUND FRAME INSTALLATION SHOWN, FOLLOW SAME PROCEDURE FOR SQUARE FRAME.

FIXTURE INSTALLATION



-
1. IF USING AN ENCLOSURE, INSTALL IT USING HANGER BARS. INSTALL POWER SUPPLY AND MAKE ELECTRICAL CONNECTIONS. BLACK TO BLACK, WHITE TO WHITE AND GREEN TO GREEN. CUT HOLE IN THE CEILING DRUWALL USING THE HOLE IN THE ENCLOSURE AS A GUIDE. (FIGURE 1)
 2. IF NOT USING AN ENCLOSURE, CUT A HOLE PER THE CEILING CUTOUT TABLE. INSERT THE POWER SUPPLY AND INSTALL. CONNECT BLACK TO BLACK, WHITE TO WHITE AND GREEN TO GREEN.
 3. INSTALL MUD RING AS SHOWN. USE FIBERGLASS TAPE ON THE EDGES OF THE PERFORATED SHEET. SECURE THE MUD RING WITH 3 NAILS IN THE HOLES OF THE PERFORATED SHEET. (FIGURE 2)
 4. APPLY MUDDING MATERIAL OVER THE PERFORATED SHEET AND AROUND THE TRIM COLLAR. (FIGURE 3)
 5. CONNECT FIXTURE BLACK AND RED WIRES TO THE OUTPUT OF THE POWER SUPPLY. BLACK TO BLACK AND RED TO RED. (FIGURE 4)
 6. OPEN SPRINGS AND INSERT THE FIXTURE INTO THE TRIM OPENING WITH THE HEATSINK FIRST. MAKE SURE THE WIRES ARE ALL THE WAY IN. (FIGURE 5)
 7. IF THE FIXTURE IS ORIENTABLE, ORIENT THE FIXTURE. PROCEED TO SWITCH POWER ON. (FIGURE 6)