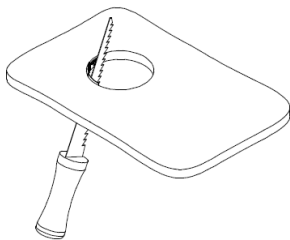

RETROFIT ENCLOSURE INSTALLATION INSTRUCTIONS



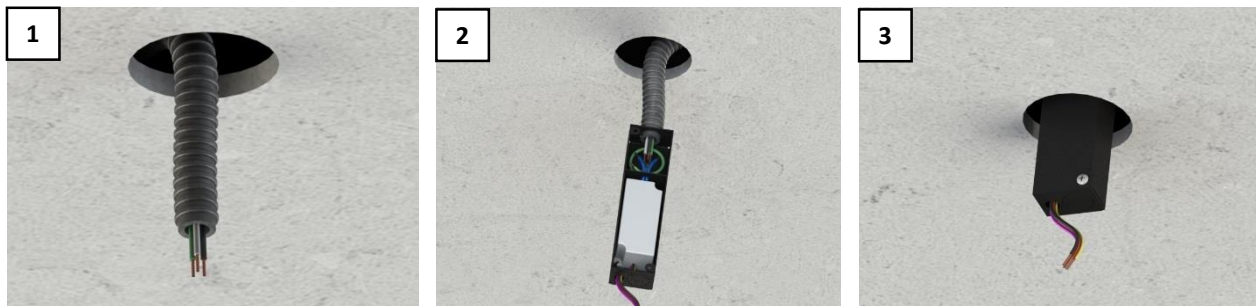
WARNING - RISK OF FIRE AND ELECTRICAL SHOCK. FIXTURE MUST BE INSTALLED BY A QUALIFIED ELECTRICIAN ONLY. FIXTURE IS INTENDED FOR INSTALLATION IN ACCORDANCE WITH THE NATIONAL ELECTRICAL CODE, LOCAL AND FEDERAL SPECIFICATIONS. DISCONNECT POWER AT ELECTRICAL PANEL BEFORE SERVICING. **RETAIN THESE INSTRUCTIONS FOR MAINTENANCE REFERENCE.**



NOTE: ROUND FRAME INSTALLATION SHOWN, FOLLOW SAME PROCEDURE FOR SQUARE FRAME.

CUT OUT DIMENSIONS VARY DEPENDING ON THE FIXTURE INSTALLED. CONSULT THE FIXTURE INSTALLATION INSTRUCTIONS FOR SPECIFIC CUT OUT SIZE.

FIXTURE INSTALLATION



-
1. MAKE SURE ALL WIRES ARE ACCESIBLE PRIOR TO INSTALLING THE RETROFIT ENCLOSURE. (FIGURE 1)
 2. REMOVE COVER AND KNOCK OUT HOLES ON THE RETROFIT ENCLOSURE TO THE APPROPRIATE SIZE PER THE CONDUIT USED. ATTACH THE CONDUIT TO THE ENCLOSURE. CONNECT THE GROUND WIRE TO THE GREEN GROUND WIRE IN THE ENCLOSURE, CONNECT THE WIRES TO THE POWER SUPPLY. IF AVAILABLE, CONNECT DIMMING WIRES TO THE POWER SUPPLY ON THE OPPOSITE END. (FIGURE 2)
 3. ATTACH COVER AND PUSH THE RETROFIT ENCLOSURE THROUGH THE HOLE, LEAVING THE RED AND BLACK WIRES ACCESSIBLE TO INSTALL IN THE FIXTURE. (FIGURE 3)