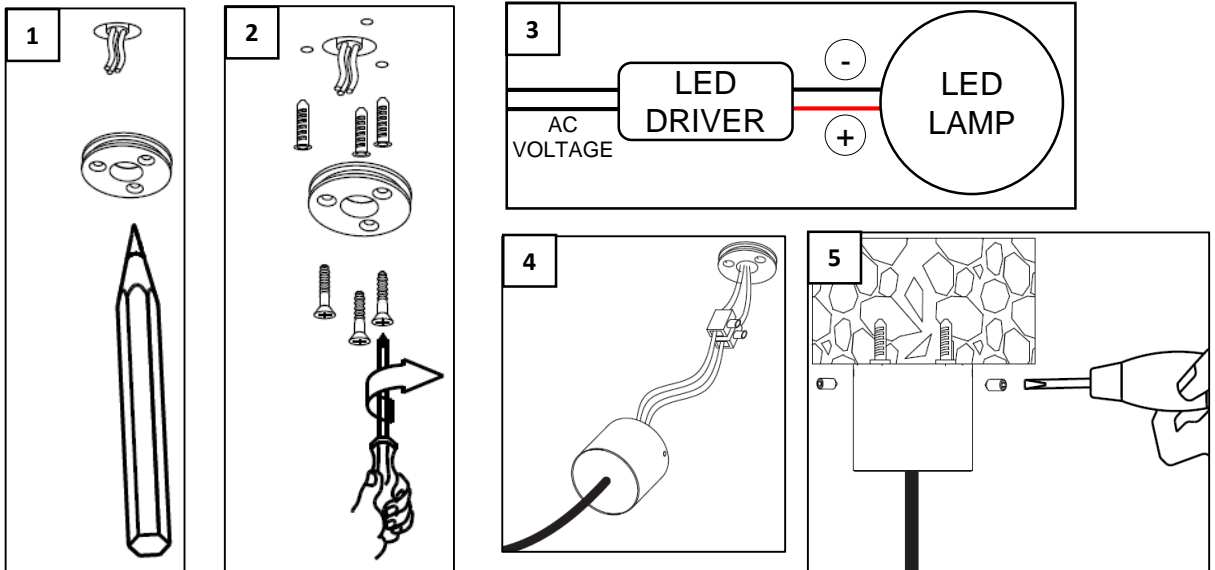


FLUTE PENDANT INSTALLATION INSTRUCTIONS



WARNING - RISK OF FIRE AND ELECTRICAL SHOCK. FIXTURE MUST BE INSTALLED BY A QUALIFIED ELECTRICIAN ONLY. FIXTURE IS INTENDED FOR INSTALLATION IN ACCORDANCE WITH THE NATIONAL ELECTRICAL CODE, LOCAL AND FEDERAL SPECIFICATIONS. DISCONNECT POWER AT ELECTRICAL PANEL BEFORE SERVICING. **RETAIN THESE INSTRUCTIONS FOR MAINTENANCE REFERENCE.**

FIXTURE INSTALLATION



1. USING MOUNTING DISC, MARK THE 3 HOLES ON THE LOCATION WHERE THE PENDANT WILL BE LOCATED. (FIGURE 1)
2. DRILL THREE HOLES AND ATTACH MOUNTING DISC TO THE CEILING USING APPROPRIATE HARDWARE PER THE MATERIAL BEING MOUNTED TO. (FIGURE 2)
3. INSTALL REMOTE DRIVER TO THE LOW VOLTAGE LINES. BLACK TO BLACK AND RED TO RED. (FIGURE 3)
4. CONNECT PENDANT TO THE LOW VOLTAGE LINES MAKING SURE THE MOUNTING COVER IS ON THE PENDANT. BLACK TO BLACK AND RED TO RED. (FIGURE 4)
5. SECURE MOUNTING COVER TO THE MOUNTING DISC USING THE TWO SET SCREWS PROVIDED. (FIGURE 5)