

## DIVA PENDANT INSTALLATION INSTRUCTIONS

---

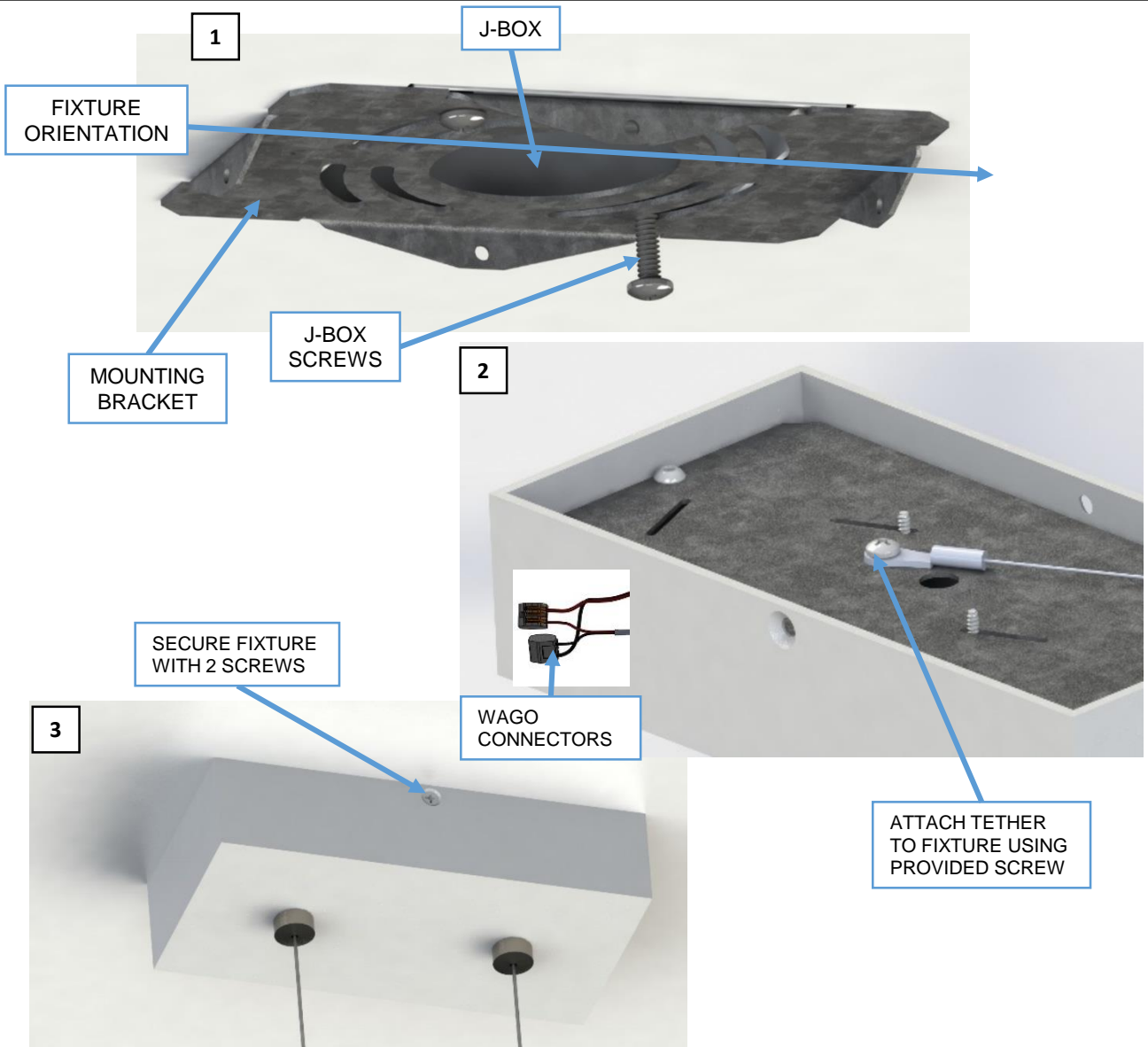


---

**WARNING** - RISK OF FIRE AND ELECTRICAL SHOCK. FIXTURE MUST BE INSTALLED BY A QUALIFIED ELECTRICIAN ONLY. FIXTURE IS INTENDED FOR INSTALLATION IN ACCORDANCE WITH THE NATIONAL ELECTRICAL CODE, LOCAL AND FEDERAL SPECIFICATIONS. DISCONNECT POWER AT ELECTRICAL PANEL BEFORE SERVICING. **RETAIN THESE INSTRUCTIONS FOR MAINTENANCE REFERENCE.**

---

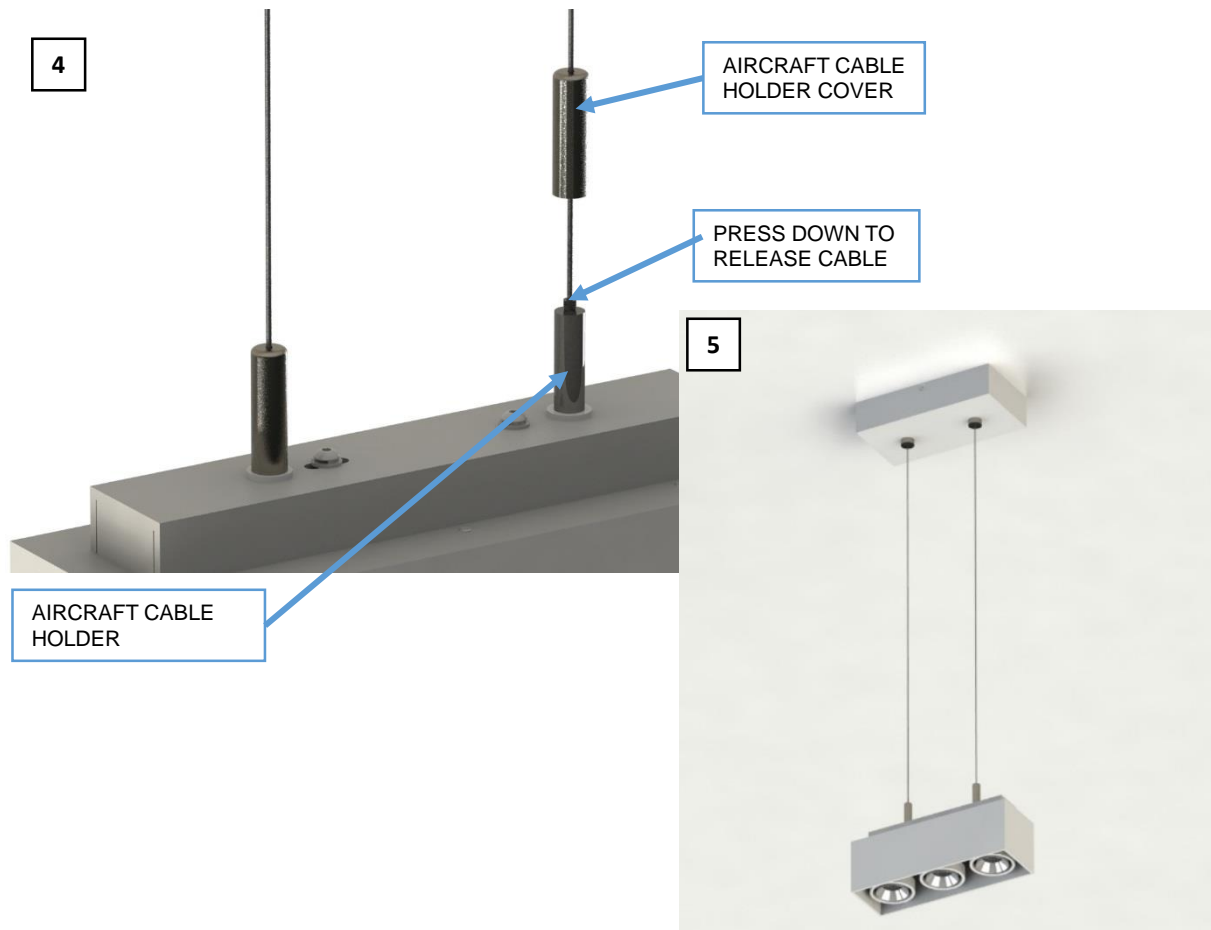
# FIXTURE INSTALLATION



1. ATTACH MOUNTING BRACKET TO J-BOX VIA SCREWS. THE FIXTURE WILL BE ORIENTED PARALLEL TO THE LONGER SIDES OF THE MOUNTING BRACKET. (FIGURE 1)
2. ATTACH TETHER FROM MOUNTING BRACKET TO MAIN FIXTURE USING PROVIDED SCREWS. (FIGURE 2)
3. TO MAKE ELECTRICAL CONNECTIONS, CONNECT GROUND TO THE GREEN WIRE ON FIXTURE, THE WHITE WIRE FROM THE FIXTURE TO THE NEUTRAL LINE WIRE AND THE BLACK WIRE FROM THE FIXTURE TO THE HOT LINE WIRE. USE PROVIDED WAGO CONNECTORS.
4. CAREFULLY PLACE FIXTURE ON MOUNTING BRACKET ALIGNING THE HOLES ON THE SIDES WITH THE MOUNTING BRACKET. BE CAREFULL NOT TO PINCH ANY WIRES DURING THIS. IF WIRES GET IN THE WAY, PUSH THEM BACK INTO THE J-BOX. USING THE 2 PROVIDED SCREWS, SECURE THE FIXTURE TO THE MOUNTING BRACKET. (FIGURE 3)

# FIXTURE INSTALLATION

---



5. TO ADJUST HEIGHT, REMOVE THE AIRCRAFT CABLE HOLDER COVER BY UNSCREWING THEM OFF. PUSH THE CABLE IN TO RAISE THE FIXTURE. PRESS THE TIP OF THE AIRCRAFT HOLDER TO ALLOW THE CABLE TO SLIDE OUT, LOWERING THE FIXTURE. ONCE THE FIXTURE IS LEVEL AND AT THE APPROPRIATE HEIGHT, RE ATTACH THE HOLDER COVERS. (FIGURE 4)
6. TURN POWER BACK ON TO LIGHT UP THE FIXTURE. (FIGURE 5)