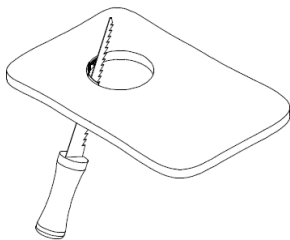

LUNA 1 SERIES DOWNLIGHT INSTALLATION INSTRUCTIONS



WARNING - RISK OF FIRE AND ELECTRICAL SHOCK. FIXTURE MUST BE INSTALLED BY A QUALIFIED ELECTRICIAN ONLY. FIXTURE IS INTENDED FOR INSTALLATION IN ACCORDANCE WITH THE NATIONAL ELECTRICAL CODE, LOCAL AND FEDERAL SPECIFICATIONS. DISCONNECT POWER AT ELECTRICAL PANEL BEFORE SERVICING. RETAIN THESE INSTRUCTIONS FOR MAINTENANCE REFERENCE.

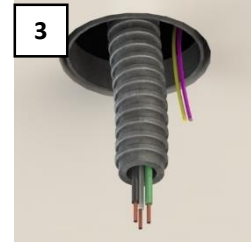
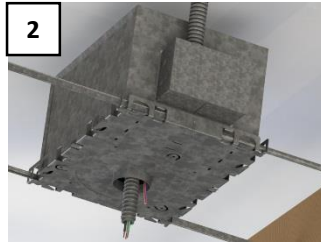
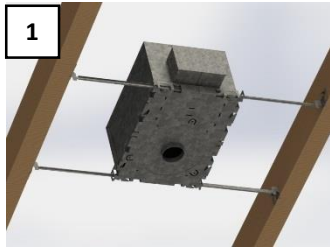
CUTOUT TABLE



NOTE: ROUND FRAME INSTALLATION SHOWN, FOLLOW SAME PROCEDURE FOR SQUARE FRAME.

FIXTURE	CUTOUT
LUNA 1 SERIES	56mm / 2.2"

FIXTURE INSTALLATION



1. INSTALL IC RATED BOX USING HANGER BARS. (FIGURE 1)
2. KNOCK OUT A HOLE ON THE IC BOX AND RUN THE CONDUIT THROUGH IT. CONTINUE RUNNING THE CONDUIT THROUGH THE IC BOX OUT THROUGH THE OPENING BEFORE INSTALLING THE CEILING. (FIGURE 2)
3. AFTER INSTALLING THE DRY WALL CEILING, IT WILL NOT BE POSSIBLE TO ACCESS THE INSIDE OF THE IC BOX AGAIN. ATTACH THE DRY WALL CEILING AND FINISH. MAKE SURE THE FLEXIBLE CONDUIT HANGS OUT SLIGHTLY FROM THE OPENING. THE POWER LINES AS WELL AS ANY WIRING FOR DIMMING MUST ALSO BE HANGING OUT. (FIGURE 3)
4. REMOVE COVER OF THE RETROFIT BOX, KNOCK OUT AN APPROPRIATE SIZED OPENING PER THE CONDUIT BEING USED. ATTACH THE CONDUIT TO THE RETROFIT BOX, CONNECT THE GREEN GROUND WIRE FROM THE RETROFIT BOX TO THE GROUND WIRE FROM THE CEILING. CONNECT POWER SUPPLY WIRES TO THE MAIN LINE WIRES ON THE CEILING. BLUE TO NEUTRAL AND BROWN TO LINE. (FIGURE 4)
5. ATTACH RETROFIT BOX COVER USING THE PROVIDED TWO SCREWS. CONNECT DIMMING WIRES, IF AVAILABLE, PER DIMMER MANUFACTURER'S INSTRUCTIONS. DIM-(GRAY), DIM+(PURPLE), 10V+(YELLOW). CONNECT DOWNLIGHT FIXTURE, RED TO RED AND BLACK TO BLACK. (FIGURE 5)
6. PUSH BACK INTO THE IC BOX OPENING THE RETROFIT BOX WITH THE CONDUIT AND THE DOWNLIGHT FIXTURE ATTACHED. (FIGURE 6)
7. INSERT THE FIXTURE THROUGH THE IC BOX OPENING WITH THE SPRINGS EXTENDED. ORIENT THE FIXTURE AND SWITCH ON. (FIGURE 7)