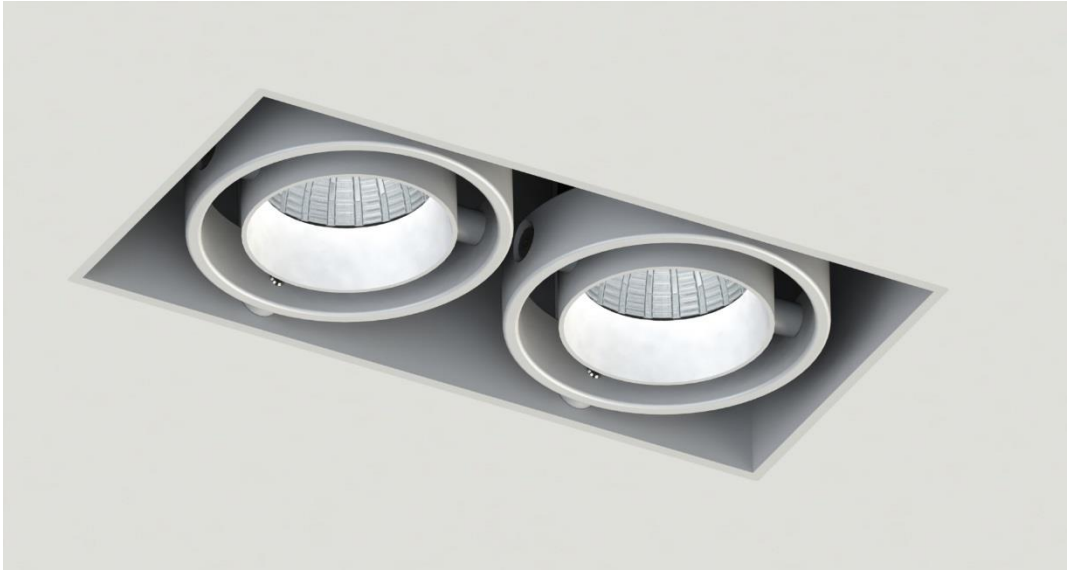
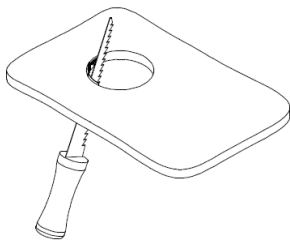


DIVA TRIMLESS INSTALLATION INSTRUCTIONS



WARNING - RISK OF FIRE AND ELECTRICAL SHOCK. FIXTURE MUST BE INSTALLED BY A QUALIFIED ELECTRICIAN ONLY. FIXTURE IS INTENDED FOR INSTALLATION IN ACCORDANCE WITH THE NATIONAL ELECTRICAL CODE, LOCAL AND FEDERAL SPECIFICATIONS. DISCONNECT POWER AT ELECTRICAL PANEL BEFORE SERVICING. RETAIN THESE INSTRUCTIONS FOR MAINTENANCE REFERENCE.

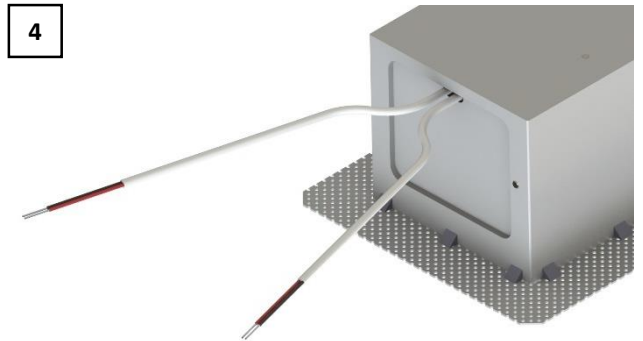
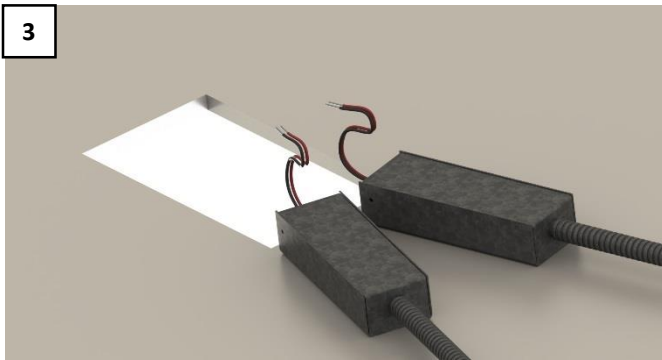
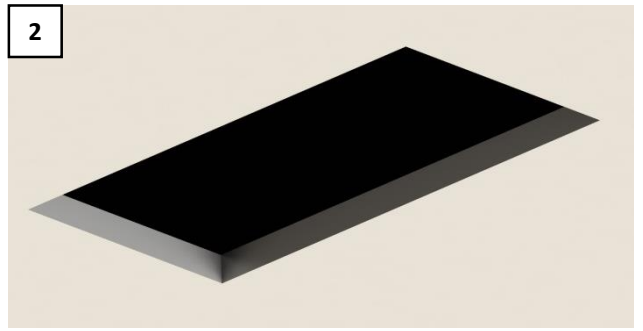
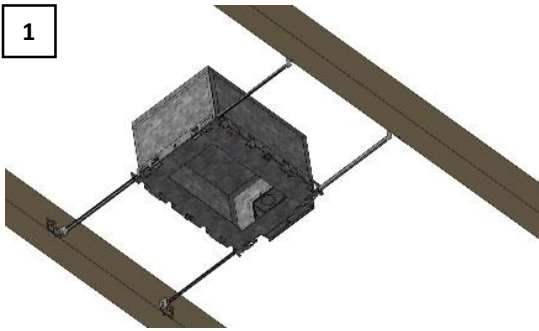
CUTOUT TABLE



NOTE: ROUND FRAME INSTALLATION SHOWN, FOLLOW SAME PROCEDURE FOR SQUARE FRAME.

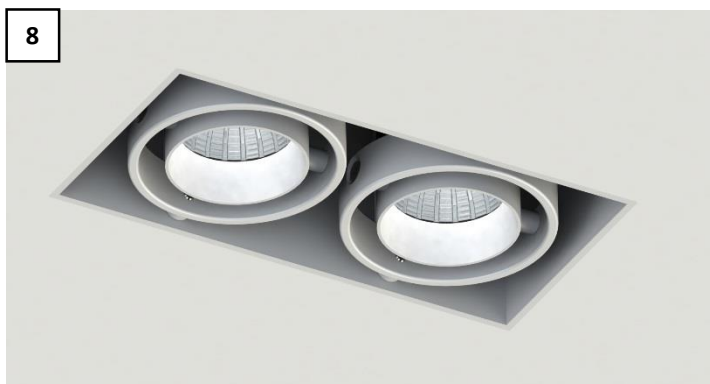
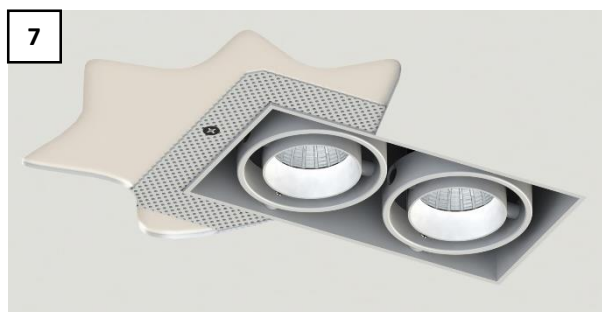
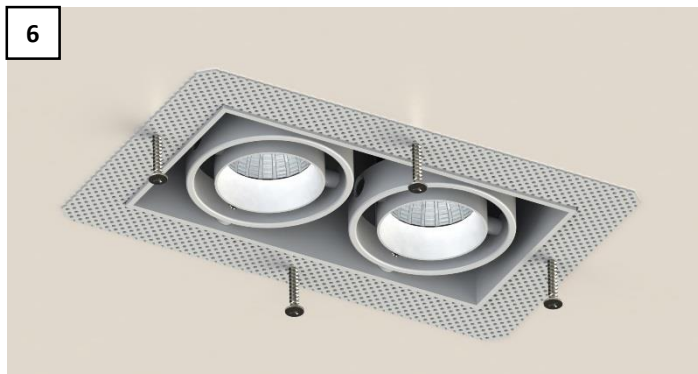
FIXTURE	CUTOUT
DIVA 2TS	3.00" X 3.00" / 78mm X 78mm
DIVA 2TD	3.00" X 6.00" / 78mm X 154mm
DIVA 2TT	3.00" X 9.00" / 78mm X 230mm
DIVA 2TQ	6.00" X 6.00" / 152mm X 152mm
DIVA 3TS	4.00" X 3.13" / 102mm X 102mm
DIVA 3TD	4.00" X 3.13" / 102mm X 202mm
DIVA 3TT	4.00" X 3.13" / 102mm X 302mm
DIVA 3TQ	8.00" X 3.13" / 202mm X 202mm
DIVA 5TS	6.00" X 3.13" / 152mm X 152mm
DIVA 5TD	6.00" X 3.13" / 152mm X 302mm
DIVA 5TT	6.00" X 3.13" / 152mm X 452mm
DIVA 5TQ	12.00" X 3.13" / 302mm X 302mm

FIXTURE INSTALLATION



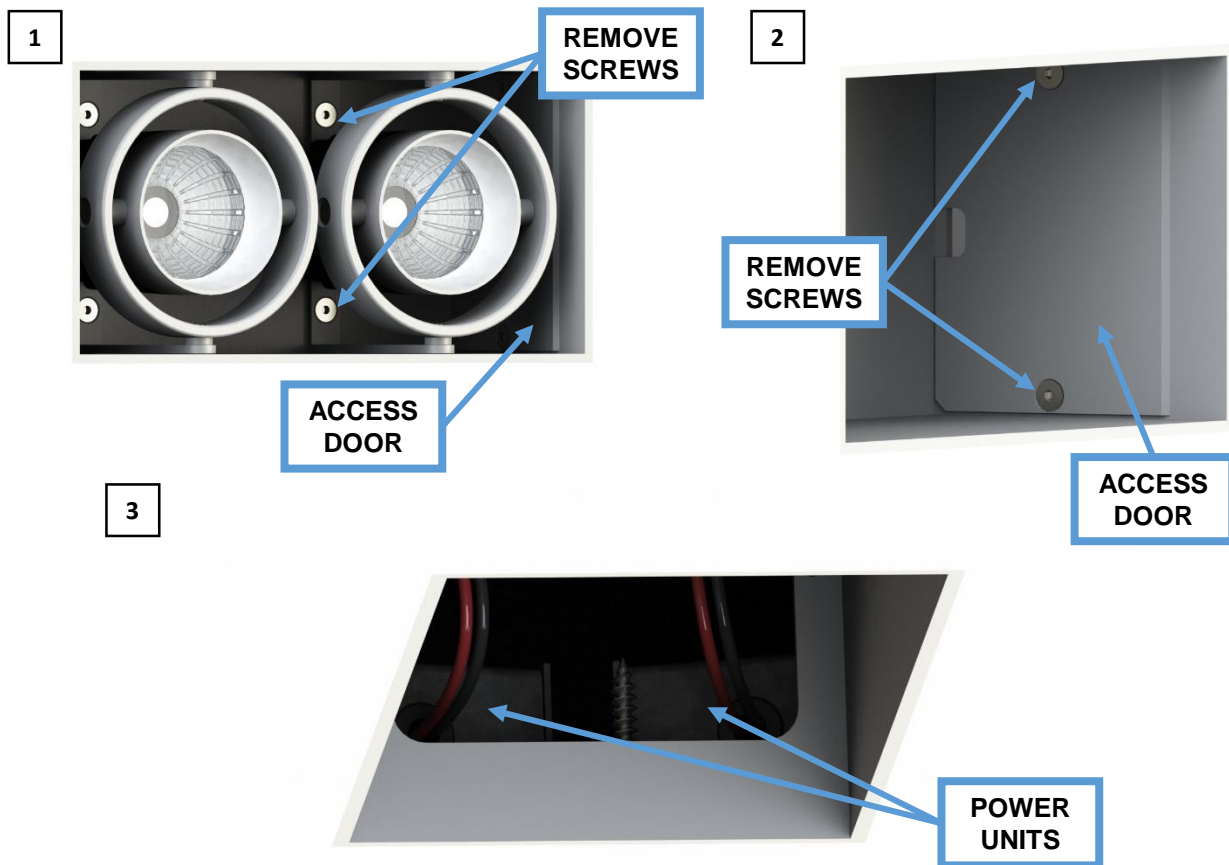
1. IF USING AN IC BOX, INSTALL USING THE HANGER BARS PROVIDED. (FIGURE 1)
2. CUT OUT IN CEILING PER CUT OUT TABLE OR USE THE IC BOX AS A GUIDE IF AVAILABLE. MAKE SURE CONDUIT FOR POWER UNITS IS ACCESSIBLE AFTER CUTTING OPENING IN CEILING. (FIGURE 2)
3. INSTALL ONE POWER UNIT PER LIGHT ENGINE AVAILABLE. CONNECT LINE VOLTAGE WIRES TO THE POWER SUPPLY. GROUND TO GREEN WIRE, WHITE/BLUE TO NEUTRAL LINE WIRE AND BLACK/BROWN TO HOT LINE WIRE. (FIGURE 3)
NOTE: DIVA 2TS AND DIVA 2TD DRIVERS MUST BE REMOTELY INSTALLED IN A LOCATION THAT IS ACCESSIBLE AFTER THE FIXTURE IS INSTALLED. IT WILL NOT BE POSSIBLE TO ACCESS THE DRIVERS THROUGH THE FIXTURES AFTER THESE MODELS ARE INSTALLED.
4. LOCATE LOW VOLTAGE WIRES ON DIVA FIXTURE. (FIGURE 4)

FIXTURE INSTALLATION



-
5. CONNECT A PAIR OF LOW VOLTAGE WIRES TO EACH POWER UNIT USING PROVIDED WAGO CONNECTORS. (FIGURE 5)
 6. INSERT FIXTURE INTO THE OPENING AND SECURE TO THE CEILING USING APPROPRIATE SCREWS AND TAPE. (FIGURE 6)
 7. APPLY MUD MATERIAL TO THE PERFORATED SHEET. (FIGURE 7)
 8. TURN POWER BACK ON TO THE FIXTURE AND ORIENT THE LIGHT ENGINES TO ACHIEVE THE DESIRED LIGHT DISTRIBUTION. (FIGURE 8)

FIXTURE MAINTENANCE



1. REMOVE GIMBAL NEXT TO DRIVER ACCESS DOOR BY REMOVING TO SCREWS ABOVE THE LIGHT ENGINE. (FIGURE 1)
2. REMOVE DRIVER ACCESS DOOR SCREWS. (FIGURE 2)
3. PULL POWER UNITS OUT THROUGH THE OPENING TO ACCESS WIRING AND DRIVERS. (FIGURE 3)
4. WHEN FINISHED WITH MAINTENANCE, RE-ATTACH THE ACCESS DOOR AND LIGHT ENGINE.

NOTE: DIVA 2TS AND DIVA 2TD MUST BE HAVE THE DRIVER REMOTELY INSTALLED. DRIVER MAINTENANCE SHALL BE PERFORMED AT THIS LOCATION SINCE THE DRIVERS ARE NOT ACCESSIBLE THROUGH THE FIXTURE.