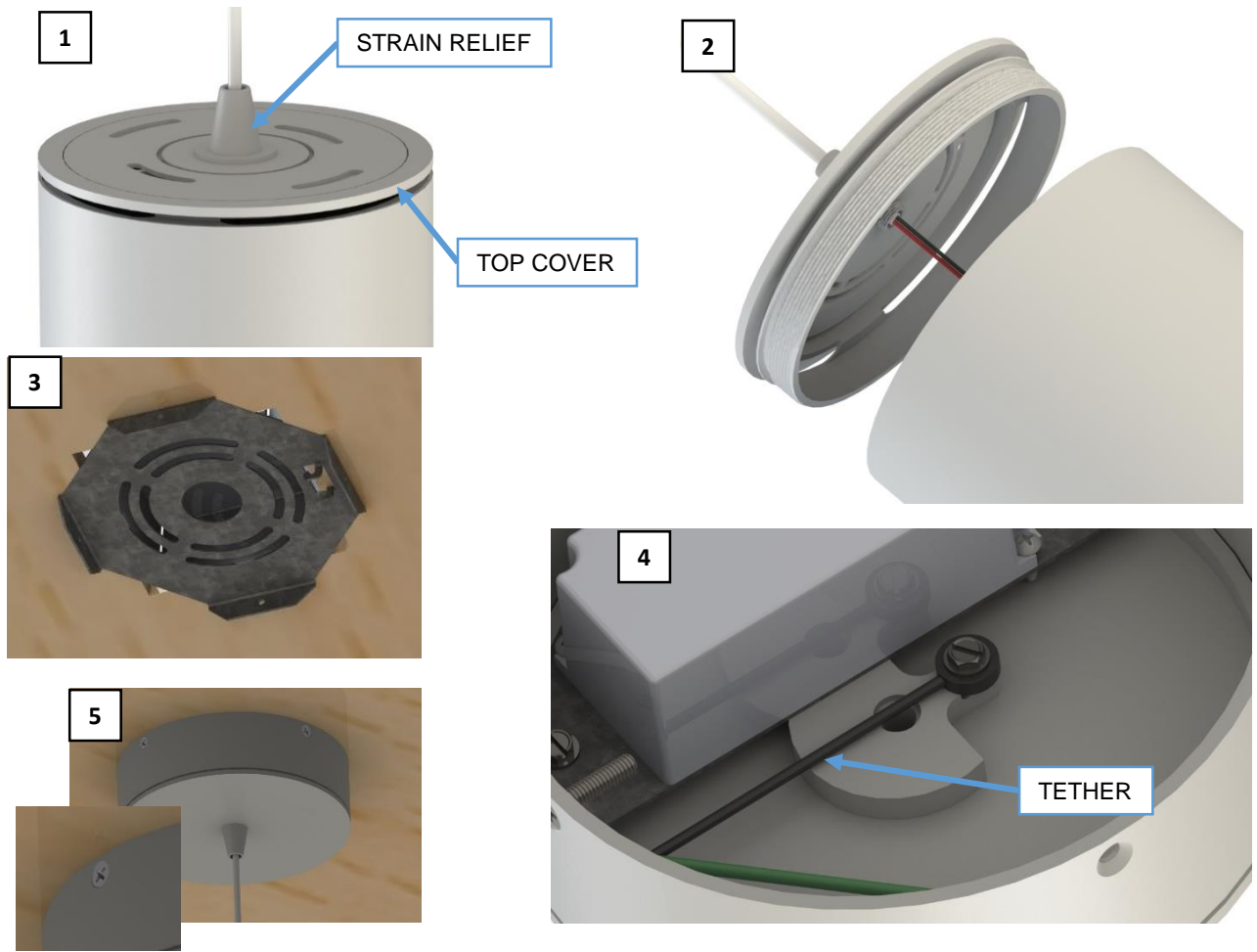

BONGO PENDANT INTEGRATED DRIVER INSTALLATION INSTRUCTIONS



WARNING - RISK OF FIRE AND ELECTRICAL SHOCK. FIXTURE MUST BE INSTALLED BY A QUALIFIED ELECTRICIAN ONLY. FIXTURE IS INTENDED FOR INSTALLATION IN ACCORDANCE WITH THE NATIONAL ELECTRICAL CODE, LOCAL AND FEDERAL SPECIFICATIONS. DISCONNECT POWER AT ELECTRICAL PANEL BEFORE SERVICING. RETAIN THESE INSTRUCTIONS FOR MAINTENANCE REFERENCE.

FIXTURE INSTALLATION



1. TO ADJUST FIXTURE HEIGHT,
 - REMOVE THE TOP COVER OF THE BONGO PENDANT BY UNSCREWING IT.
 - LOOSEN THE STRAIN RELIEF ON THE COVER AND MOVE IT ALONG THE POWER CORD TO THE DESIRED HEIGHT. CUT AND STRIP THE CABLE TO REVEAL 2 WIRES, STRIP THE 2 WIRES AND CONNECT TO THE BONGO USING THE WAGO CONNECTORS ALREADY ON THE FIXTURE, RED TO RED AND BLACK TO BLACK. TIGHTEN THE STRAIN RELIEF TO LOCK THE FIXTURE IN POSITION AND RE ATTACH THE COVER TO THE BONGO. (FIGURE 1 AND 2)
2. ATTACH MOUNTING BRACKET TO J-BOX USING 2X SCREWS. (FIGURE 3)
3. USE THE BLACK NYLON TETHER ON THE FIXTURE TO SUPPORT IT FROM THE MOUNTING BRACKET WHILE INSTALLING AND MAKING ELECTRICAL CONNECTIONS. (FIGURE 4)
4. CONNECT MAIN POWER LINES TO THE POWER SUPPLY, GROUND TO GREEN ON THE FIXTURE, NEUTRAL TO WHITE/BLUE ON THE FIXTURE AND HOT TO BLACK/BROWN ON THE FIXTURE.
5. ATTACH CANOPY COVER TO MOUNTING BRACKET USING 4 PROVIDED FLAT HEAD SCREWS ON THE SIDES. (FIGURE 5)
6. TURN ON POWER TO LIGHT FIXTURE.